

# waterpark attendance

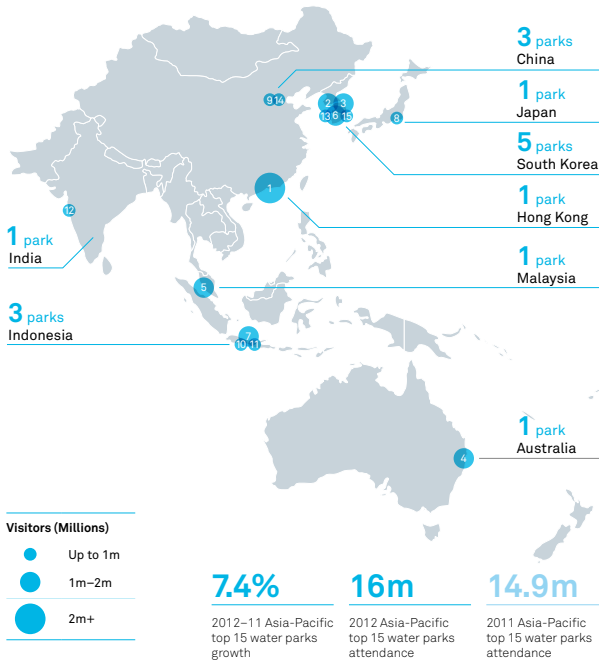
Published by the Themed Entertainment Association (TEA) and the Economics practice at AECOM, this excerpt highlights the top visited waterparks from around the world

## Top 20 water parks worldwide

	PARK , location	change	2012	2011
1	TYPHOON LAGOON AT DISNEY WORLD Orlando, FL, U.S.A.	2.0%	2,100,000	2,058,000
2	CHIMELONG WATERPARK Guangzhou, China	6.4%	2,021,000	1,900,000
3	BLIZZARD BEACH AT DISNEY WORLD Orlando, FL, U.S.A.	2.0%	1,929,000	1,891,000
4	OCEAN WORLD, Gangwon-Do, South Korea	-0.3%	1,720,000	1,726,000
5	AQUATICA Orlando, FL, U.S.A.	2.5%	1,538,000	1,500,000
6	CARIBBEAN BAY Gyeonggi-Do, South Korea	0.7%	1,508,000	1,497,000
7	AQUAVENTURE Dubai, U.A.E.	8.3%	1,300,000	1,200,000
8	WET 'N WILD Orlando, FL, U.S.A.	2.0%	1,247,000	1,223,000
9	WET N WILD GOLD COAST Gold Coast, QLD, Australia	0.0%	1,200,000	1,200,000
10	SUNWAY LAGOON Kuala Lumpur, Malaysia	15.4%	1,200,000	1,040,000
11	RESOM SPA CASTLE Chungcheongnam-Do, South Korea	12.0%	1,158,000	1,034,000
12	SCHLITTERBAHN New Braunfels, TX, U.S.A.	3.6%	1,017,000	982,000
13	ATLANTIS WATER ADVENTURE Jakarta, Indonesia	5.3%	1,000,000	950,000
14	SUMMERLAND Tokyo , Japan	13.1%	990,000	875,000
15	HAPPY MAGIC WATER CUBE Beijing, China	26.0%	968,000	768,000
16	THE JUNGLE WATER ADVENTURE Bogor, West Java, Indonesia	9.2%	951,000	871,000
17	WILD WADI WATER PARK Dubai, U.A.E.	-3.4%	860,000	890,000
18	BEACH PARK Fortaleza, Brazil	7.0%	843,000	788,000
19	SIAM WATER PARK Tenerife, Spain	0.0%	800,000	800,000
20	OCEAN PARK WATER ADVENTURE Jakarta, Indonesia	25.0%	750,000	600,000

## Top 15 water parks in Asia-Pacific

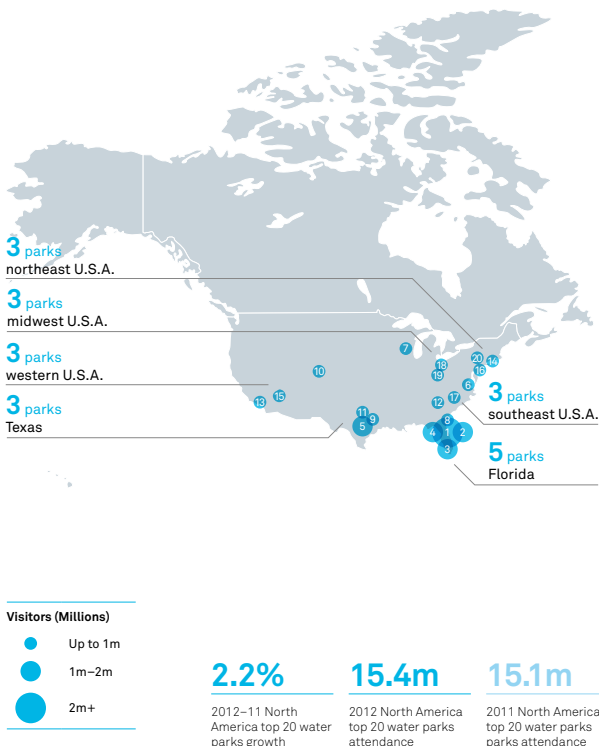
Where are the top 15 water parks in Asia-Pacific?



PARK, location	change	2012	2011
1 CHIMELONG WATERPARK Guangzhou, China	6.4%	2,021,000	1,900,000
2 OCEAN WORLD Gangwon-Do, South Korea	-0.3%	1,720,000	1,726,000
3 CARIBBEAN BAY Gyeonggi-Do, South Korea	0.7%	1,508,000	1,497,000
4 WET 'N WILD GOLD COAST Gold Coast, Australia	0.0%	1,200,000	1,200,000
5 SUNWAY LAGOON Kuala Lumpur, Malaysia	15.4%	1,200,000	1,040,000
6 RESOM SPA CASTLE Chungcheongnam-Do, South Korea	12.0%	1,158,000	1,034,000
7 ATLANTIS WATER ADVENTURE Jakarta, Indonesia	5.3%	1,000,000	950,000
8 SUMMERLAND Tokyo, Japan	13.1%	990,000	875,000
9 HAPPY MAGIC WATER CUBE Beijing, China	26.0%	968,000	768,000
10 THE JUNGLE WATER ADVENTURE Bogor, West Java, Indonesia	9.2%	951,000	871,000
11 OCEAN PARK WATER ADVENTURE Jakarta, Indonesia	25.0%	750,000	600,000
12 WATER KINGDOM Mumbai, India	-12.5%	700,000	800,000
13 RESOM OCEAN CASTLE Chungcheongnam-Do, South Korea	9.6%	638,000	582,000
14 OLYMPIC WATER CUBE INDOOR WATERPARK Beijing, China	21.0%	605,000	500,000
15 SEORAK WATERPIA Gangwon-Do, South Korea	7.3%	590,000	550,000

## Top 20 water parks in North America

Where are the top 20 water parks in North America?



PARK, location	change	2012	2011
1 TYPHOON LAGOON AT DISNEY WORLD Orlando, FL, U.S.A.	2.0%	2,100,000	2,058,000
2 BLIZZARD BEACH AT DISNEY WORLD Orlando, FL, U.S.A.	2.0%	1,929,000	1,891,000
3 AQUATICA Orlando, FL, U.S.A.	2.5%	1,538,000	1,500,000
4 WET 'N WILD Orlando, FL, U.S.A.	2.0%	1,247,000	1,223,000
5 SCHLITTERBAHN New Braunfels, TX, U.S.A.	3.6%	1,017,000	982,000
6 WATER COUNTRY USA Williamsburg, VA, U.S.A.	3.5%	748,000	723,000
7 NOAH'S ARK Wisconsin Dells, WI, U.S.A.	3.6%	666,000	643,000
8 ADVENTURE ISLAND Tampa, FL, U.S.A.	1.1%	651,000	644,000
9 SCHLITTERBAHN Galveston, TX, U.S.A.	2.1%	546,000	535,000
10 HYLAND HILLS WATER WORLD Denver, CO, U.S.A.	-3.8%	538,000	559,000
11 SIX FLAGS-HURRICANE HARBOR Arlington, TX, U.S.A.	1.6%	508,000	500,000
12 SIX FLAGS-WHITE WATER Marietta, GA, U.S.A.	1.0%	505,000	500,000
13 RAGING WATERS San Dimas, CA, U.S.A.	1.9%	480,000	471,000
14 SPLISH-SPASH Riverhead, NY, U.S.A.	7.2%	463,000	432,000
15 WET 'N' WILD Phoenix, AZ, U.S.A.	0.0%	461,000	461,000
16 SIX FLAGS HURRICANE HARBOR Jackson, NJ, U.S.A.	6.0%	424,000	400,000
17 WET 'N' WILD EMERALD POINT Greensboro, NC, U.S.A.	2.0%	406,000	398,000
18 SOAK CITY CEDAR POINT Sandusky, OH, U.S.A.	2.0%	403,000	395,000
19 ZOOMEZI BAY Powell, OH, U.S.A.	4.0%	389,000	374,000
20 CAMEL BEACH Tannersville, PA, U.S.A.	0.5%	367,000	365,000